

# ETI QUARTERLY NEWSLETTER

JUNE 2025



## EUROPE, HERE WE COME!

A blue banner for the 'INDUSTRY TECHNOLOGY CONFERENCE 2025'. On the left is a logo with a car and circuit lines. In the center is a map of Germany with a red location pin over Lippstadt. To the right is the ETI logo. The text '20-22 OCT 2025' and 'LIPPSTADT, GERMANY' is prominently displayed in white.



**BRIAN PLOTT,  
EXECUTIVE DIRECTOR OF ETI**



As I reflect back on the first half of this year, I am amazed at how much we have achieved. We have hosted 2 wonderful events, honored the 19th Founding Member (Neil Davis), attended and provided insights into many more industry events, gained numerous new members and we are interacting with more OEMs than ever before. No wonder our LinkedIn following keeps growing, oh and did I mention we reached 1000 followers. We are excited to host our first ever event in Europe this October. Please follow ETI on LinkedIn, check out our website and future newsletters to keep up to date with what else is happening.

Best Regards,

*Brian*

**MESSAGE FROM  
CHRIS BALHMAN,  
PRESIDENT OF ETI**



Hello ETI Members,

I'm honored to be your President of the ETI Board of Directors for the next year. On behalf of the Board of ETI, we are grateful for your continued support and participation in our organization and at our events. ETI is in a transition phase, with renewed efforts to expand our membership and geographic reach. These efforts are paying off with new members and global members joining ETI EU, and new members from different parts of the industry joining ETI here in the US. The coming year will see improvements in board and staff governance and efficiency, designed to enhance value to our members and the vehicle service and repair industry, while strengthening advocacy.

ETI has a unique position in the industry, advocating for providers of vehicle service tools, equipment, diagnostics, repair information, telematics, training, and technologies. Because we are an apolitical organization, our events enable an honest and open exchange between our members, OEMs, and other industry thought leaders. This in turn gives the OEMs a more complete picture of how their vehicles are serviced, making the case for a continued and expanded flow of the required information from the OEMs to service those vehicles properly.

The challenges facing our industry are opportunities for our organization to welcome new members: service and technology providers using AI in the workshop, training organizations, business service providers, and others, can benefit all members and vehicle OEMs. Operating from a position of breadth, depth, and strength in our membership shows the OEMs that the independent aftermarket is an indispensable partner to keeping their customers satisfied.

We are privileged to have you as our members, and we appreciate your ongoing support. I'm here to listen to your concerns and thoughts to help us improve; please contact me at the email address below.

Sincerely,  
Christopher (Chris) Bahlman  
President, ETI Board of Directors  
Christopher.Bahlman@us.bosch.com

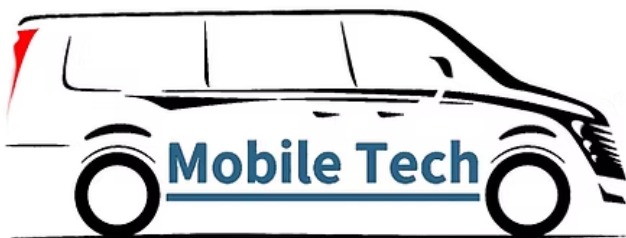


# WELCOME TO OUR NEW MEMBERS



Cal/Amp®

EXTEQ



WAYLENS

LAUNCH



NOREGON®



## KEY ETI CONTACTS:

- General Queries - [admin@etools.org](mailto:admin@etools.org)
- Technical Queries - [gpotter@etools.org](mailto:gpotter@etools.org)
- OEM Relations - [mtruckel@etools.org](mailto:mtruckel@etools.org)
- USA Membership - [mtruckel@etools.org](mailto:mtruckel@etools.org)
- EU Membership - [wlee@etools.org](mailto:wlee@etools.org)
- Events - [mtruckel@etools.org](mailto:mtruckel@etools.org)
- Invoicing - [mtruckel@etools.org](mailto:mtruckel@etools.org)



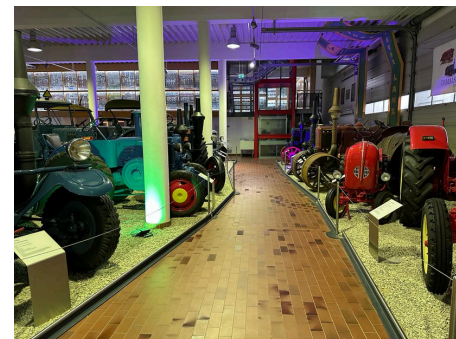
# EVENTS



We enjoyed hosting ToolTech 2025, welcoming new members and honoring Neil Davis with the Founder's Award.



Thank you to all who joined us for our first Industry Technology Conference. It started with a golf outing and finished with a tour of the Ford Piquette Plant Museum. There were 115 attendees, representatives from 9 OEM's and updates from another 2. This event was a great success thanks to all our interesting presenters, sponsors, OEM's and attendees. We look forward to seeing you at our next event.



Please join us for ETI's first ever European Conference. This event will kick-off with an Opening Reception at the local golf club, 2 days of presentations, panel discussions and a spotlight trade show plus an evening at the Lippstadt Autumn Festival and Closing Dinner at the German Tractor and Model Car Museum. For more information and to register please visit to our website.



# BOARD MEMBER SPOTLIGHT



## Chris Chesney

While my organization does not build diagnostic tools, our participation in ETI enables us to stay closely connected with the OEM teams who can assist Repairify in providing the remote services needed by our customers so they can take exceptional care of their customers. ETI connects the OEMs and aftermarket to ensure our mutual customers have a great brand experience.

## Chuck Olsen

I have been an ETI member since 2010 with 2 different member companies that specialize in remote diagnostic services. I started attending ETI events and participating in Scan-tool and Collision verticals since 2013 and have been working on alignment between different industry organizations and verticals that have a growing need for common diagnostics, tooling and up to date service information around emerging technologies such as ADAS, Secure Gateway access and ever-changing vehicle requirements. I currently serve on ETI Board of directors and have since 2020. I am looking forward to seeing ETI activities and growth in Europe as well.





# TECHNICAL UPDATE



## Chris Bowman Technical Director



During the ETI Industry Technology Conference held in Metro Detroit, Chris' presentation covered Vertical Groups, Scan Tool Group (STG), OEM Licensing Overview, TekNet Data Releases and OEM Contacts.

Please contact Marina ([mtruckel@etools.org](mailto:mtruckel@etools.org)) regarding topics you would like to hear about at future events.

## Items ETI is watching and influencing:

As discussed at the recent ETI Industry Technology Conference, ETI is looking to get more opinions from members regarding SAE J2534 API for Long Messages. The SAE J2534 Task Force is looking to address the lack of status for transmission/reception of large messages, ability to minimize buffering and asynchronous message transfer issues.

We are looking to get feedback on the SOVD Whitepaper,  
<https://www.etools.org/wp-content/uploads/2025/04/SOVD-Whitepaper.pdf>.

ETI is pushing back on some EV OEM efforts to re-define Pin 16 of the SAE J1962 connector effectively removing the requirement for permanent 12v.

We would like to have our members join the new SAE Vehicle Dynamics Systems OBD Task Force. **Please contact [gpotter@etools.org](mailto:gpotter@etools.org) and/or [carrpoint@gmail.com](mailto:carrpoint@gmail.com).**

Also, ETI is closely monitoring SAE J1962 for adding new 1000BaseT (Gigabit Ethernet) pin assignments as well as DoIP communications and its effect on SAE J1978-2 (OBD Scan Tool for OBDOnUDS).





## **Driving Change:**

# **What the New EU Roadworthiness Package Means for the Aftermarket**

The European Union has published a new Roadworthiness Package that brings long-overdue updates to vehicle testing standards. This is more than a regulatory refresh, it's a vital step forward in ensuring modern vehicles are tested accurately, transparently, and in line with the technologies they now contain.

One of the most significant shifts is the move towards digitalisation of records. By creating a shared digital database of test results, including mileage and emissions data, the EU aims to reduce fraud, support cross-border recognition of MOT-style inspections, and streamline the vehicle lifecycle across member states.

Critically, the package also calls for updated testing protocols that address the increasing complexity of today's vehicles. Advanced systems such as ADAS and modern propulsion technologies have, until now, often fallen outside the scope of traditional periodic inspections. These updates are designed to ensure vehicles remain not only roadworthy but safe and efficient as their systems evolve.

These changes support the EU's wider Vision Zero goals and commitment to safe, sustainable mobility. According to the Commission, full implementation by 2050 could save more than 1,300 lives and prevent over 10,000 serious injuries each year.

Although the package is EU-focused, the implications are global. With many ETI members already operating in Europe, these new standards are shaping the development of diagnostic tools, data access, and service equipment worldwide.

We'll be discussing this further at the ETI European Industry Conference in Lippstadt, Germany, from 20–22 October, hosted by Hella. The event will provide a platform to explore how new EU requirements impact tool manufacturers, OEMs, and service providers alike.

If you're working in diagnostics, repair, emissions, or inspection, this is a conversation you'll want to be part of.

## **IF YOU WOULD LIKE TO GET INVOLVED IN A TECHNICAL COMMITTEE PLEASE CONTACT**

**US - GREG POTTER - GPOTTER@ETOOLS.ORG**

**EU - WINSTON LEE - WLEE@ETOOLS.ORG**



# INDUSTRY TECHNOLOGY SPONSORS 2025



**BOSCH**



DG TECHNOLOGIES  
Vehicle Network Solutions



# CURRENT EUROPEAN CONFERENCE SPONSORS 2025



**WE COULD NOT HOST OUR EVENTS WITHOUT  
OUR MEMBERS' SUPPORT. IF YOU WOULD LIKE  
TO SPONSOR A FUTURE EVENT PLEASE  
CONTACT MARINA MTRUCKEL@ETOOLS.ORG**

